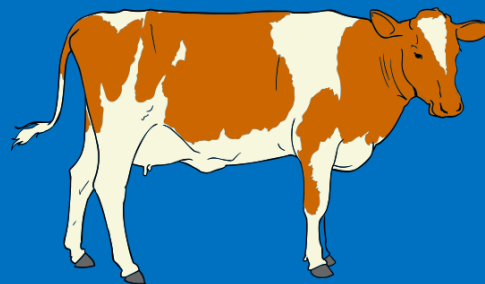


# SANTA TERESA COUNTY PARK GRAZING MANAGEMENT PROGRAM

FRIENDS OF SANTA TERESA PARK

AUGUST 4, 2016



## **OBJECTIVES OF COUNTY PARKLANDS RANGE POLICY**

- **1. Provide visitor access and recreational opportunities**
- **2. Provide for the safety of park users**
- **3. Protect, conserve, and enhance natural plant communities.**
- **4. Minimize fire hazards to parklands and private property by managing vegetative fuels.**
- **5. Rehabilitate degraded vegetation and wildlife habitat.**
- **6. Establish cooperative relationships with adjacent property owners.**

# UNIQUE ASPECTS OF SERPENTINE GRASSLANDS

- Limited in geographic extent
- Support unique endemic flora/wildflowers
- Habitat for federally listed bay checkerspot butterfly
- Threatened by exotic annual grasses, air pollution
- Livestock grazing recognized as a valuable resource management tool (Stu Weiss and coauthors, 2003 USFWS report; USFWS Serpentine Habitat Recovery Plan).

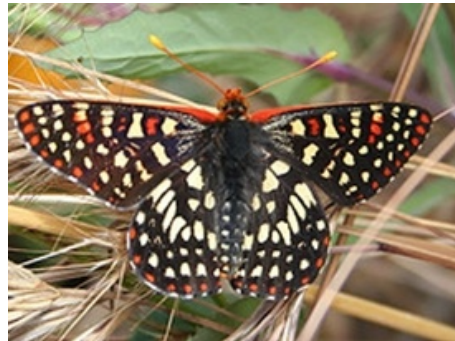
## PROJECT BACKGROUND

- USBOR/USFWS grant funding + County Parks funds
- Management plan and CEQA completed 2013
- Unique opportunity to design grazing around park features
- Implementation 2014-2016
  - Archaeological surveys
  - 9 miles of fencing under contract, gates, signs, corral
  - 7 water systems (2 springs, 5 from GOW)
- Competitive process to select licensee
- Cattle arrive July 2016

**SERPENTINE GRASSLAND  
ENDEMIC**



California Plantain



Bay Checkerspot Butterfly



Santa Clara Valley Dudleya



Woodland Monolopia



Serpentine Leptosiphon



Serpentine Bedstraw

**MORE SERPENTINE GRASSLAND  
ENDEMIC**



Most Beautiful Jewelflower



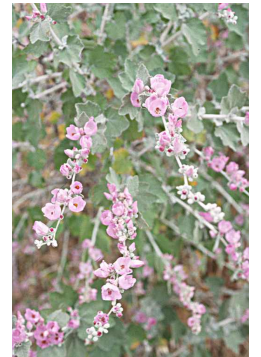
Common Jewelflower



Serpentine Lessingia



Fragrant Fritillary



Hall's Bush Mallow

## OTHER NATIVE SPECIES THAT BENEFIT FROM GRAZING



California Red Legged  
Frog



Burrowing owl



California Tiger  
Salamander

## INVASIVE PLANTS IN COUNTY PARK GRASSLANDS



Yellow Star Thistle



← Milk Thistle



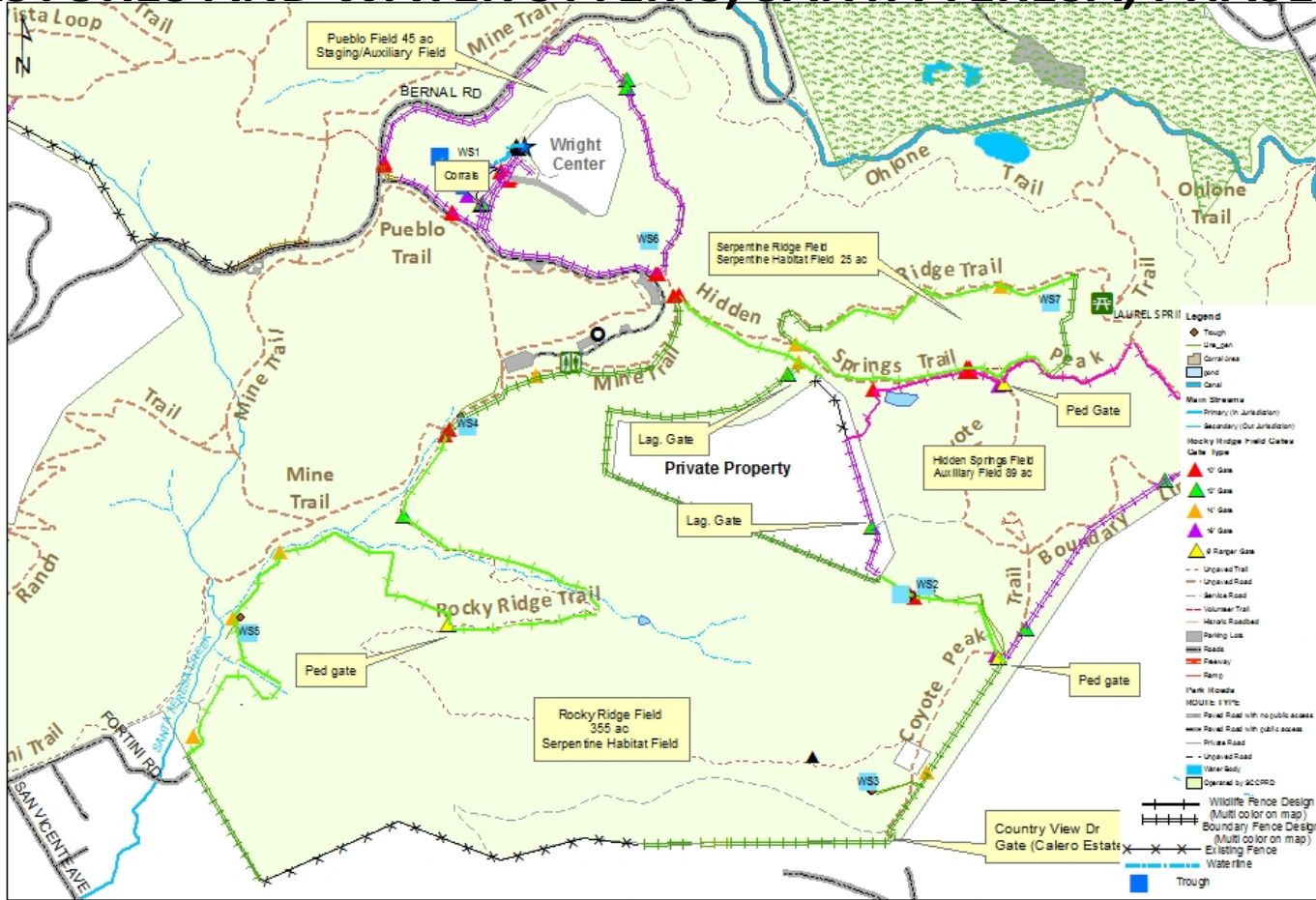
← Barbed Goat Grass →



**Fenceline contrast showing reduced  
fuel loading on grazed side of fence**



# PASTURES AND WATER SYTEMS, SANTA TERESA, PHASE 1



 <b>SANTA CLARA COUNTY PARKS</b> <small>This map generated by the County of Santa Clara Department of Parks and Recreation. The GIS files were compiled from various sources. While deemed reliable, the Department assumes no liability.</small>	<b>Title:</b> Cattle Fencing at Santa Teresa County Park		<b>ST Grazing Fields &amp; Water Systems Overview</b>	
	<b>Date:</b> 12/16/13	<b>Created By:</b> D.Clark	<b>Scale:</b> 0 240 480 960 Feet	

# POTENTIAL ISSUES AND SOLUTIONS

- Issue: cattle damage to trails
- Solutions: cattle exclusion with fencing, rocking, moving attractants, altering season of use

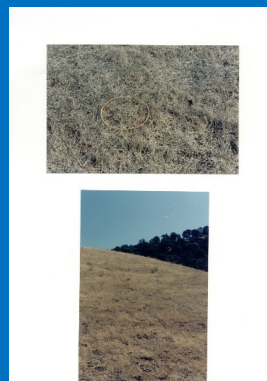


# POTENTIAL ISSUES AND SOLUTIONS

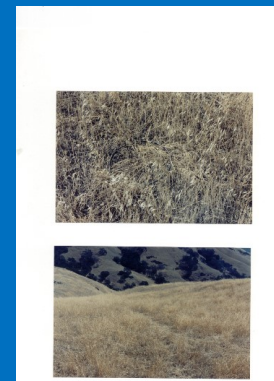
- Issue: overgrazing of grasslands
- Solutions: Water and supplemental nutrient distribution, herding, monitoring, rotational grazing



300 lb/ac



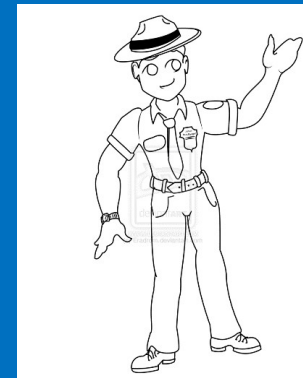
800 lb/ac



1,500 lb/ac

# POTENTIAL ISSUES AND SOLUTIONS

- Issue: Safety for park visitors
- Solution: Safe trail practices, education, workshops



# Sharing The Land With Livestock

## ***With a little care, you can share the land safely with cows.***

While most cows are peaceful, mothers will do almost anything to protect their calves. Do not get caught between a cow and her calf. Always keep dogs on leash around cattle, a mother cow sees dogs as serious predators.



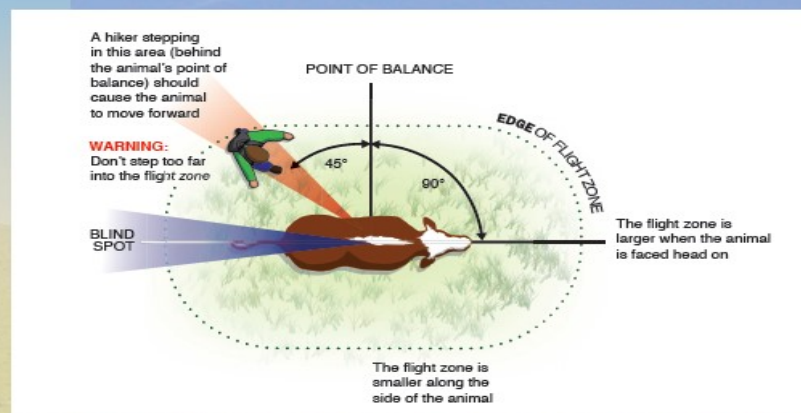
Photo: Rick Lohmeyer

**If you find cattle blocking the trail, here is how to pass safely:**

- *Ensure the cows have a safe, open place to go.*
- *Alert them by speaking in a normal voice.*
- *Step calmly into their "personal space" or "flight zone". If they do not move, take another step. This should get them moving.*
- *Step back and give space to any cow that shows signs of aggression.*

***Enjoy hiking safely among your cow neighbors!***

Photo: Michele Hammond



# ANNUAL MONITORING

- Residual dry matter (RDM) monitoring in fall using comparative yield method
- Biodiversity monitoring in spring using Daubenmire method
- Visual observations by licensee
- Periodic visits by park staff and volunteers
- Information provided by park visitors

## HOW CAN YOU HELP?

- **Talk to other park visitors about the resource management benefits of the grazing program**
- **Use safe trail use practices and encourage others to do so**
- **Keep gates as found (open or closed)**
- **Report problems to park staff**
- **Volunteer!**

Contact:  
Barry Hill  
Parks Natural Resource Program Supervisor  
barry. [hill@prk.sccgov.org](mailto:hill@prk.sccgov.org)  
(408) 355-2361



**Thank  
you**