



# MARTIAL COTTLE PARK

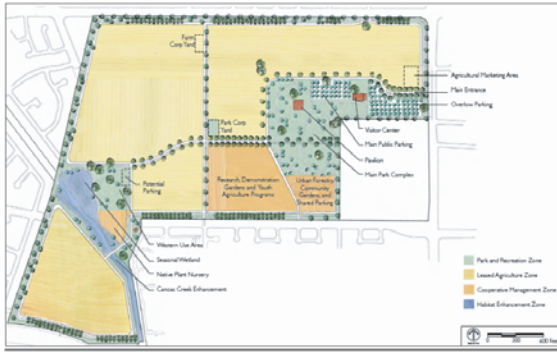


A collaborative planning project between California State Parks and Santa Clara County Parks

## About Martial Cottle Park

Martial Cottle Park is a 287.54 acre property located in a residential and commercial neighborhood of South San Jose, bounded by Branham Lane, Snell Avenue, Chynoweth Avenue and Highway 85. An agricultural farm and ranch through four generations, the Martial Cottle Park property is jointly owned by the State of California and County of Santa Clara.

The development of Martial Cottle Park will reflect the Donor's Vision for an educational public resource that will provide interpretive programs highlighting the agricultural heritage of Santa Clara Valley. Future trails, picnic areas and other low-impact, passive recreational uses as well as small-scale agriculture and community gardens are also part of the vision for Martial Cottle Park.



## Project Updates

### Board of Supervisors to Consider Approval of Martial Cottle Park Plan

The County of Santa Clara Board of Supervisors will consider the Martial Cottle Park State Park General Plan and County Park Master Plan ("Park Plan") and Environmental Impact Report (EIR) at their regular meeting on February 8, 2011. (For additional meeting information, see announcement at right and the County of Santa Clara website at <http://www.sccgov.org>).

Should the Board certify the EIR and approve the Park Plan at the upcoming February 8, 2011 meeting, it will highlight the County of Santa Clara and the State of California's successful completion of a three and a half year public process to develop a long range plan that fulfills the Donor's vision for a historic agricultural park at Martial Cottle Park. As the lead agency, the County of Santa Clara Parks and Recreation Department (County Parks Department) has conducted 12 public meetings and 5 community workshops over the planning period to solicit ideas and comments on the Donor's vision for a new State Park and County Park in an unincorporated area of San Jose. Public input from these meetings and resulting recommendations provide the framework for the Martial Cottle Park Plan that will be implemented over the next 20 years.

## Winter Newsletter 2011

### What's New?

**The County of Santa Clara Board of Supervisors will consider the Martial Cottle Park Plan and EIR at their regular meeting on February 8, 2011.**

The primary focus of the Park Plan has been the preservation of open space, recreational use and a public historic agricultural park that would promote and sustain farming traditions showing and displaying the agricultural heritage of the Santa Clara Valley from the mid-1850's into the 20th century. The main uses of the Park would include agricultural production, habitat enhancement, visitor serving and recreational facilities and trails, and educational interpretive programming related to the site's cultural and natural resources. The project will include trails, a visitor center, a multi-use outdoor pavilion, picnic grounds and day use facilities, demonstration gardens, community gardens, urban forestry program areas, youth agricultural facilities and environmental enhancement areas such as seasonal wetlands and a native plant nursery.

In addition to public meetings and workshops, the County Parks Department has maintained a public email notification list of over 350 interested individuals, and a regular mailing list of over 4,000 individuals located within a mile of the project site, for periodic project updates provided in the newsletters.

### California State Park and Recreation Commission

Upon the Board's approval of the project, California State Parks would forward the Park Plan and Final EIR to the State Park and Recreation Commission for their consideration. This meeting is scheduled for Wednesday, March 2, 2011, at the County Government Center, Isaac Newton Senter Auditorium, 70 West Hedding Street, San Jose, California, 95110.

## Meetings Announcements

### County of Santa Clara Board of Supervisors Regular Meeting

**Date: Tuesday, February 8, 2011**

**Time: 9:30 a.m. (SEE AGENDA FOR ITEM #)**

**Location: Board of Supervisors Chambers**

**County Government Center**

**70 West Hedding Street, San Jose, 95110**

### State Park & Recreation Commission Meeting

**Date: Wednesday, March 2, 2011**

**Time: 9:00 a.m.**

**Location: Isaac Newton Senter Auditorium**

**County Government Center**

**70 West Hedding Street, San Jose, 95110**

## Environmental Review Process

### Preparation of an Environmental Impact Report

The County Parks Department prepared a Draft Environmental Impact Report (EIR) to provide an assessment of the potential environmental consequences of adopting a combined Park Plan for Martial Cottle Park.

In accordance with the requirements of CEQA, the County Parks Department prepared a Notice of Completion of the Draft EIR on September 9, 2010. The Draft EIR was circulated for a 45-day public review period, which ended on October 22, 2010. During the public review period, the County received written comments on the Draft EIR. A meeting was held on September 22, 2010 to provide the public with information on the intent and content and the proposed mitigations in the Draft EIR and understand how they can participate in the public review process.

The EIR identified feasible mitigation measures and alternatives that would avoid or reduce significant impacts. The Draft EIR discloses the possible environmental impacts associated with the implementation of the Park Plan and proposes mitigation measures to reduce these impacts to a less than significant level. With the exception of one of the projects impacts related to Climate Change, all impacts identified for the implementation of the Park Plan would be mitigated to a less than significant level with the implementation of mitigation measures in the EIR.



Public Workshop Meeting #4

The EIR identified significant and unavoidable impacts associated with Climate Change which the Board of Supervisors would consider as part of the Statement of Overriding Considerations for the Final EIR.

## Key Milestones of the Project

**Program Document for the Martial Cottle Park Plan** - April 2, 2008 County Parks and Recreation Commission meeting; May 8, 2008 HLUET Committee meeting; and August 12, 2008 Board of Supervisors meeting.

**Preferred Master Plan Alternative for the Martial Cottle Park Plan** - April 1, 2009 County Parks and Recreation Commission meeting and April 16, 2010 HLUET Committee meeting.

**California State Parks' Classification and Naming of Martial Cottle Park** - October 31, 2008 State Park and Recreation Commission meeting.

**Draft Final Park Plan for Martial Cottle Park** - November 3, 2010 County Parks and Recreation Commission meeting.

## Public Review of Final Draft EIR

### Where can the Public View the Draft Final Park Plan and Final Draft EIR?

The Draft Final Park Plan and Final Draft EIR for Martial Cottle Park are available for viewing on the County Parks Department's website at <http://www.parkhere.org>, by clicking on "Martial Cottle Park Master Plan" and on the California State Parks' CEQA Notices website at [http://www.parks.ca.gov/?page\\_id=981](http://www.parks.ca.gov/?page_id=981), by clicking on "Northern California Parks" and "Santa Clara County."

If you wish to obtain a personal copy of the Park Plan or EIR, the County Parks Department would be able to provide you with a printed copy or a CD with the electronic files for a fee. The order form is located on the County Parks Department's website. Please contact Jane Mark, Project Manager, at (408) 355-2237, for a personal copy to be mailed directly to you.

## Next Steps

### Design Development Process for Park

With project approvals from the Board of Supervisors and the State Park and Recreation Commission, the County Parks Department would be able to proceed with the development of design and construction documents for the implementation of Phase I capital improvements for Martial Cottle Park, based on available financial resources.

In summary, we wish to thank all those who have read the project information, attended the public meetings and community workshops, provided oral comments and submitted written comments, and participated in the public planning process for the Martial Cottle Park Plan. You have made a valuable contribution to the legacy of this historic agricultural park.

## Contact Information

If you have questions regarding the project, contact:

Jane Mark, Senior Planner  
(408) 355-2237

Jane.Mark@prk.sccgov.org  
or

Kimberly Brosseau, Park Planner  
(408) 355-2230

Kimberly.Brosseau@prk.sccgov.org