



# MARTIAL COTTLE PARK



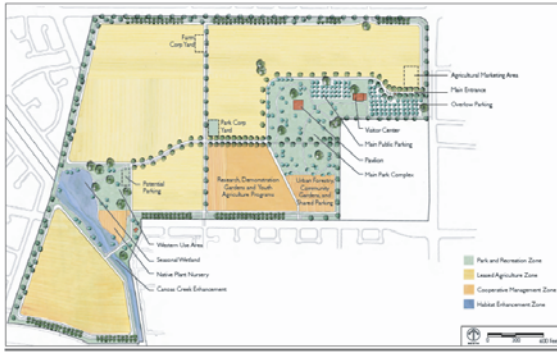
A collaborative planning project between California State Parks and Santa Clara County Parks

*Fall Newsletter 2010*

## About Martial Cottle Park

Martial Cottle Park is a 287.54 acre property located in a residential and commercial neighborhood of South San Jose, bounded by Branham Lane, Snell Avenue, Chynoweth Avenue and Highway 85. An agricultural farm and ranch through four generations, the Martial Cottle Park property is jointly owned by the State of California and County of Santa Clara.

The development of Martial Cottle Park will reflect the Donor's Vision for an educational public resource that will provide interpretive programs highlighting the agricultural heritage of Santa Clara Valley. Future trails, picnic areas and other low-impact, passive recreational uses as well as small-scale agriculture and community gardens are also part of the vision for Martial Cottle Park.



## Project Updates

### Draft State Park General Plan/County Park Master Plan for Martial Cottle Park

As part of the planning process, the County Parks Department completed a combined Draft State Park General Plan and County Park Master Plan for Martial Cottle Park, known as a Park Plan, to serve as the guiding document for the development and ongoing operations and management of Martial Cottle Park. The Draft Park Plan includes 32 goals and over 150 guidelines, and provides information on the anticipated capital improvements, operating costs, phased implementation and design guidelines.

The Draft Park Plan has been presented to the Task Force Committee and the community for public input at the February 1, 2010 Task Force meeting and February 10, 2010 Public Workshop. The public is encouraged to provide additional comments on the Draft Park Plan and are welcome at upcoming public meetings.

### Task Force's Consideration of Draft Park Plan

On February 1, 2010, the Task Force Committee for the Martial Cottle Park Plan project reviewed and considered the Draft Park Plan. Task Force members shared questions and comments related to the economic viability of the agricultural components; the accessibility of multi-use trails and Park facilities; coordination

## What's New?

A Draft Environmental Impact Report (EIR) has been prepared and is now available for public review. See page 2 for more information.

with the City of San Jose on the future roadway widening project on Branham Lane and Snell Avenue; and future capital and staffing costs for the new park. Overall, the Committee and members of the public were eager for the Park development to begin once the project is approved by the County of Santa Clara Board of Supervisors and the State of California Park and Recreation Commission.

## County Board of Supervisors' Approval of a Water Supply Assessment for Martial Cottle Park

On August 24, 2010, the County of Santa Clara Board of Supervisors approved a Water Supply Assessment (WSA) for Martial Cottle Park. As part of the preparation of the environmental documentation for this project, the County Parks Department prepared a Water Supply Assessment (WSA) to comply with Section 10910 of the California Water Code (as revised by Senate Bill 610) and California Environmental Quality Act (CEQA) requirements. The purpose of the WSA report is to determine whether the total projected water supplies associated with a public water system would be adequate to address the future water demand associated with the development and operation of Martial Cottle Park. An approved WSA must be included in the EIR prior to release for a 45-day public review and comment period. A copy of the Board-approved WSA is available online at [www.parkhere.org](http://www.parkhere.org) under "Martial Cottle Park Master Plan."

## Meetings Announcements

### Park Plan EIR Public Meeting

**Date:** Wednesday, September 22, 2010

**Time:** 6:30 - 8:30 pm

**Location:** Gunderson High School  
622 Gaundabert Lane, San Jose, 95136

### County of Santa Clara

### Parks & Recreation Commission Meeting

**Date:** Wednesday, November 3, 2010

**Time:** 6:30 pm - 9:00 pm

**Location:** County Government Center, Isaac Newton Senter Auditorium  
70 West Hedding Street, San Jose, 95110

Members of the public and agency representatives are encouraged to attend these meetings and participate in the public review of the Draft Park Plan and Draft EIR.

## Preparation of Draft EIR

A Draft Environmental Impact Report (EIR) has been prepared for the Draft Park Plan to assess the plan's possible impacts to the environment. While the Draft Park Plan establishes direction for the development of Martial Cottle Park, an EIR informs the public of possible environmental impacts associated with the Park Plan and identifies ways to mitigate (substantially lessen) the significant environmental effects of the proposed project. Under CEQA guidelines, the County of Santa Clara is the lead agency for the project, and the State of California is a responsible agency.

The County Parks Department will hold a public meeting on the Draft EIR on September 22, 2010, at 6:30 p.m. at Gunderson High School. The purpose of this meeting is for the public to become acquainted with the purpose and content of the EIR, learn about the proposed mitigations identified in the EIR, and understand how they can participate in the public review process for the EIR.

In accordance with CEQA guidelines, the EIR will be available for public review for 45 days between September 8, 2010 and October 22, 2010. Neighbors residing within approximately one-mile of Martial Cottle Park and members of the public and agency representatives who subscribed to the project update email distribution list will receive a notification about the public comment period. In addition, the availability of the Draft EIR will be advertised in local newspapers.

Members of the community and regulatory agencies are encouraged to submit written comments to the County. The public will also have an opportunity to comment on the Draft Park Plan at the County Parks and Recreation Commission meeting on November 3, 2010.

### Components of Draft Park Plan

Introduction to the Park Unit  
Existing Conditions  
Key Issues and Analysis  
Park Plan  
Implementing the Plan  
Design Guidelines  
Glossary

### Components of Draft EIR

Report Summary  
Introduction  
Project Description  
Environmental Evaluation  
Alternatives  
CEQA-Required Assessment  
Conclusions

## Contact Information

If you have questions regarding the project, contact:

Jane Mark, Senior Planner  
(408) 355-2237

Jane.Mark@prk.sccgov.org

or

Kimberly Brosseau, Park Planner  
(408) 355-2230

Kimberly.Brosseau@prk.sccgov.org

## Public Review of Draft EIR

### Where can the Public View the Draft Park Plan and Draft EIR?

The Draft Park Plan and Draft EIR for Martial Cottle Park are available for viewing on the County Parks Department's website at [www.parkhere.org](http://www.parkhere.org), by clicking on "Martial Cottle Park Master Plan" and on the California State Parks' CEQA Notices website at [http://www.parks.ca.gov/?page\\_id=981](http://www.parks.ca.gov/?page_id=981), by clicking on "Northern California Parks" and "Santa Clara County."

Printed copies of the Draft EIR are available for public review at a number of locations:

#### County of Santa Clara Clerk Recorder's Office

County Government Center  
70 West Hedding Street, East Wing, First Floor  
San Jose, CA 95110

#### County Parks and Recreation Department

Administration Office  
298 Garden Hill Drive  
Los Gatos, CA 95032

Hellyer County Park Office  
985 Hellyer Avenue  
San Jose, CA 95111

#### California Department of Parks & Recreation

Monterey District Office  
2211 Garden Road  
Monterey, CA 93940

Gavilan Sector Office  
P.O. Box 787  
San Juan Bautista, CA 95045-0787

#### Santa Clara County Libraries

Campbell Library  
77 Harrison Avenue  
Campbell, CA 95008-1499  
(408) 866-1991

Saratoga Library  
13650 Saratoga Avenue  
Saratoga, CA 95070-5099  
(408) 867-6126

#### Milpitas Library

160 North Main Street  
Milpitas, CA 95035  
(408) 262-1171

#### City of San Jose Libraries

Almaden Branch Library  
6445 Camden Avenue  
San Jose, CA 95120  
(408) 808-3040

Edenvale Branch Library  
101 Branham Lane East  
San Jose, CA 95111  
(408) 808-3036

#### Pearl Avenue Branch Library

4270 Pearl Avenue  
San Jose, CA 95136  
(408) 808-3053

#### Santa Teresa Branch Library

290 International Circle  
San Jose, CA 95119  
(408) 808-3068

#### Vineland Branch Library

1450 Blossom Hill Road  
San José, CA 95118  
(408) 808-3000

If you wish to obtain a personal copy of the Draft Park Plan or Draft EIR, the County Parks Department would be able to provide you with a printed copy or a CD with the electronic files for a fee. Please contact Jane Mark, Project Manager, at (408) 355-2237, for a personal copy to be mailed directly to you.